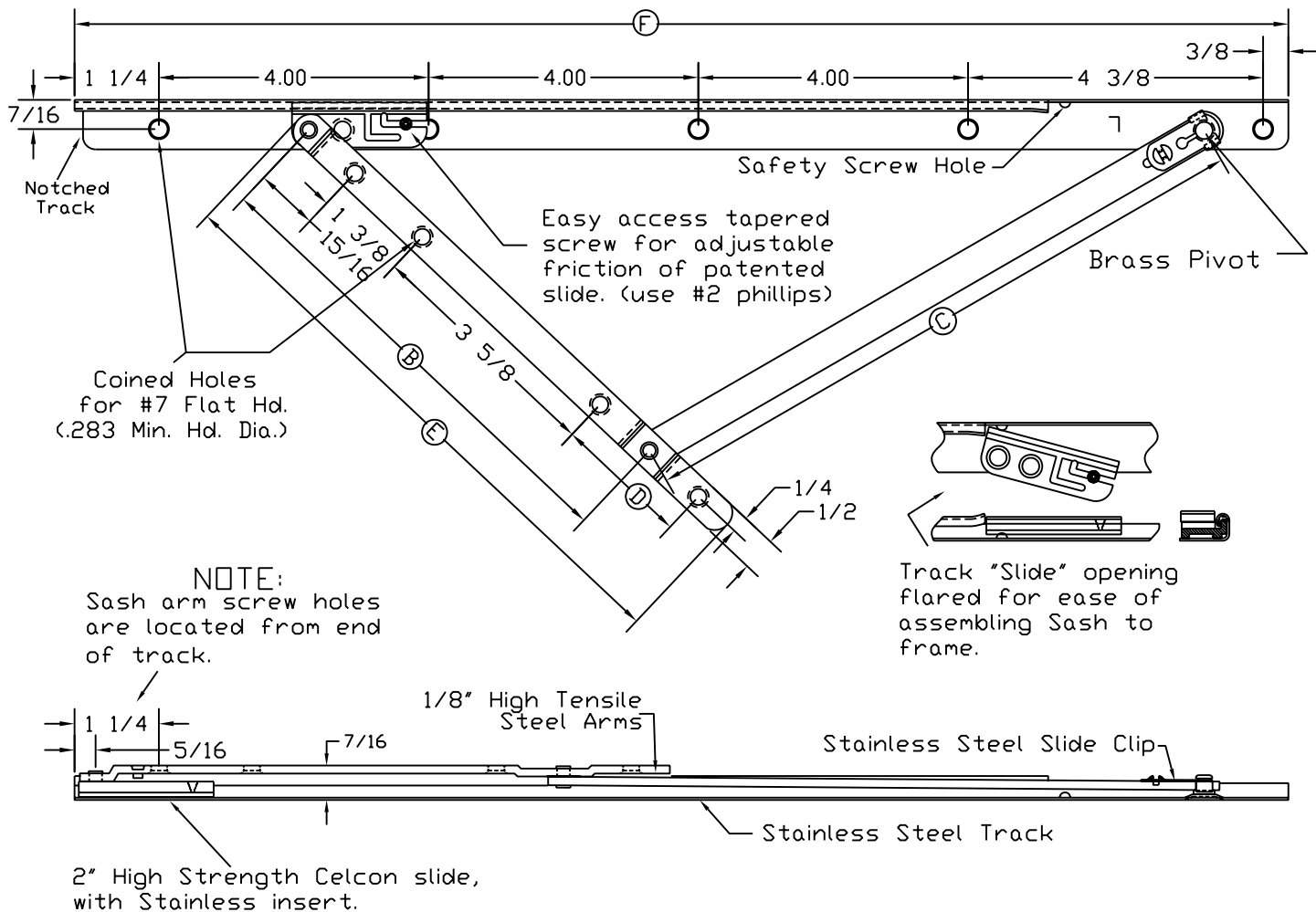
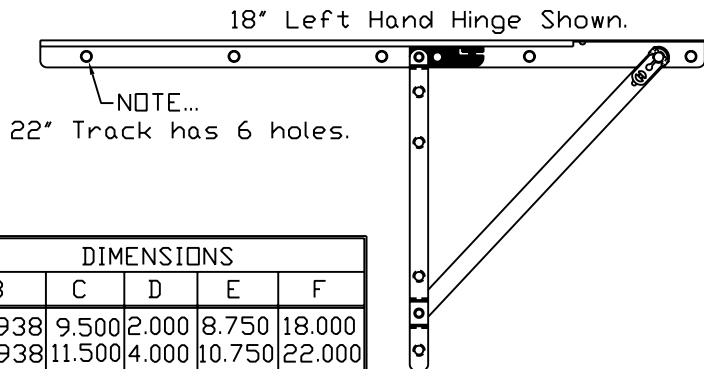
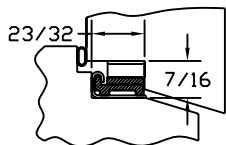


# 4300 SERIES

## 18" & 22" AWNING HINGE



All Steel parts are Zinc Dichromate plated, and Powder painted with Polyester Urethane.



STYLE DESCRIPTION	ASSEMBLED UNITS	NON-ASSEMBLED		DIMENSIONS				
		ARMS	TRACK	B	C	D	E	F
18" AWNING	4318D L/R	4018D L/R	3318B-L/R13	6.938	9.500	2.000	8.750	18.000
22" AWNING	4322D L/R	4022D L/R	3322B-L/R13	8.938	11.500	4.000	10.750	22.000

# ALL METAL STAMPING, INC.

411 W. Spruce St. PO Box 485 Abbotsford, WI 54405

Phone (715) 223-6324  
Fax (715) 223-3352