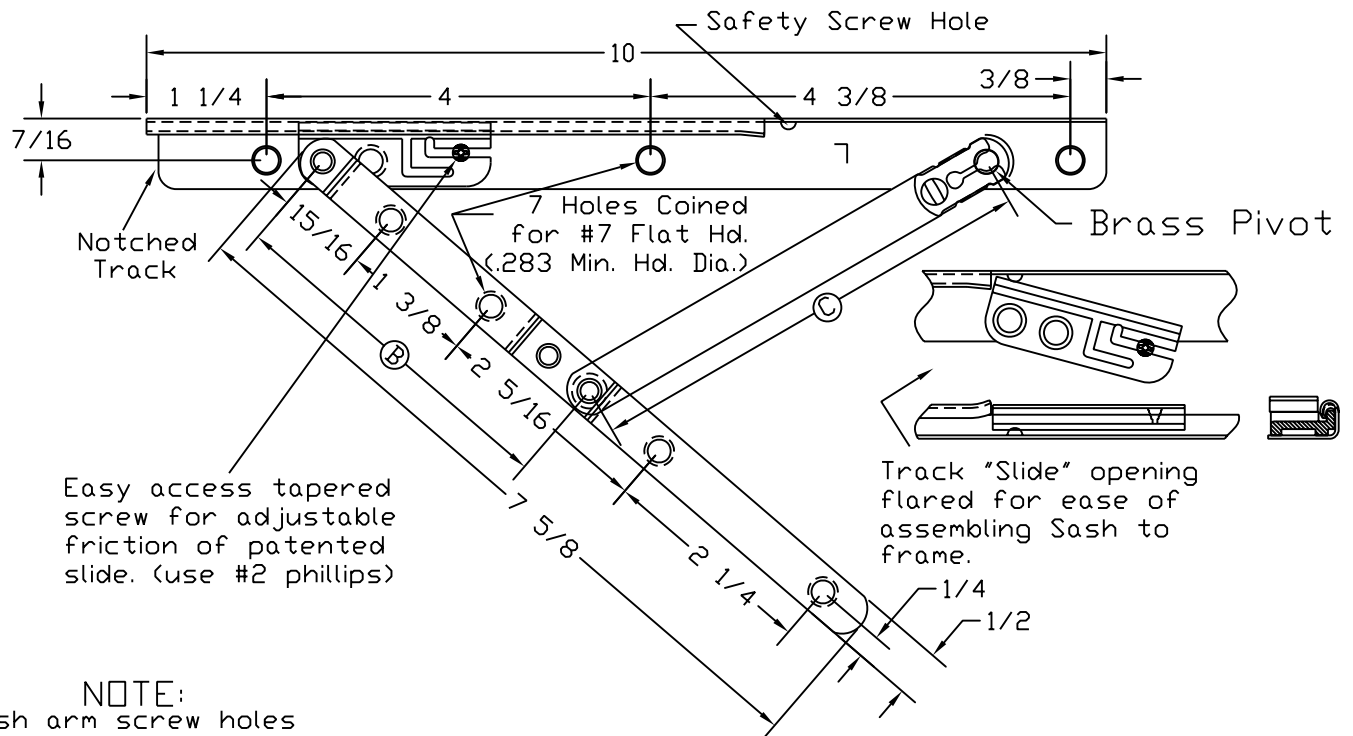
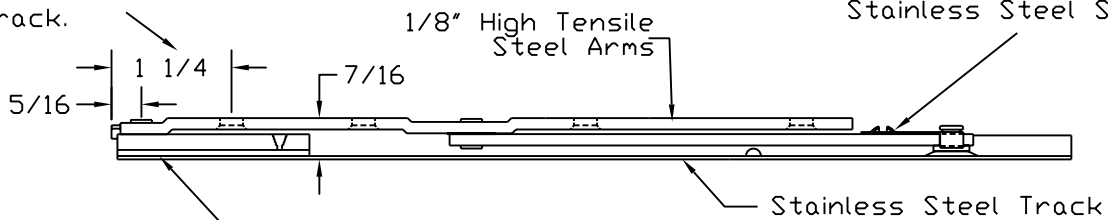


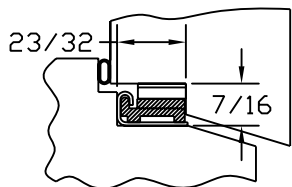
# 10" AWNING HINGE



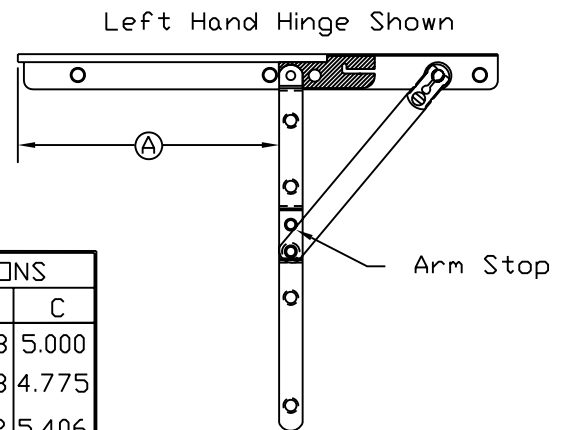
**NOTE:**  
Sash arm screw holes are located from end of track.



2" High Strength Celcon slide, with Stainless insert.



All Steel parts are Zinc Dichromate plated, and Powder painted with Polyester Urethane.



STYLE DESCRIPTION	ASSEMBLED UNITS	NON-ASSEMBLED		DIMENSIONS		
		ARMS	TRACK	A	B	C
STANDARD	3366D L/R	3066D L/R	3305 L/R	4.869	3.438	5.000
WASHABILITY	3386D L/R	3086D L/R	3305 L/R	5.437	3.663	4.775
EGRESS	3396D L/R	3096D L/R	3305 L/R	4.025	3.032	5.406

## ALL METAL STAMPING, INC.

411 W. Spruce St. PO Box 485 Abbotsford, WI 54405

Phone (715) 223-6324  
Fax (715) 223-3352