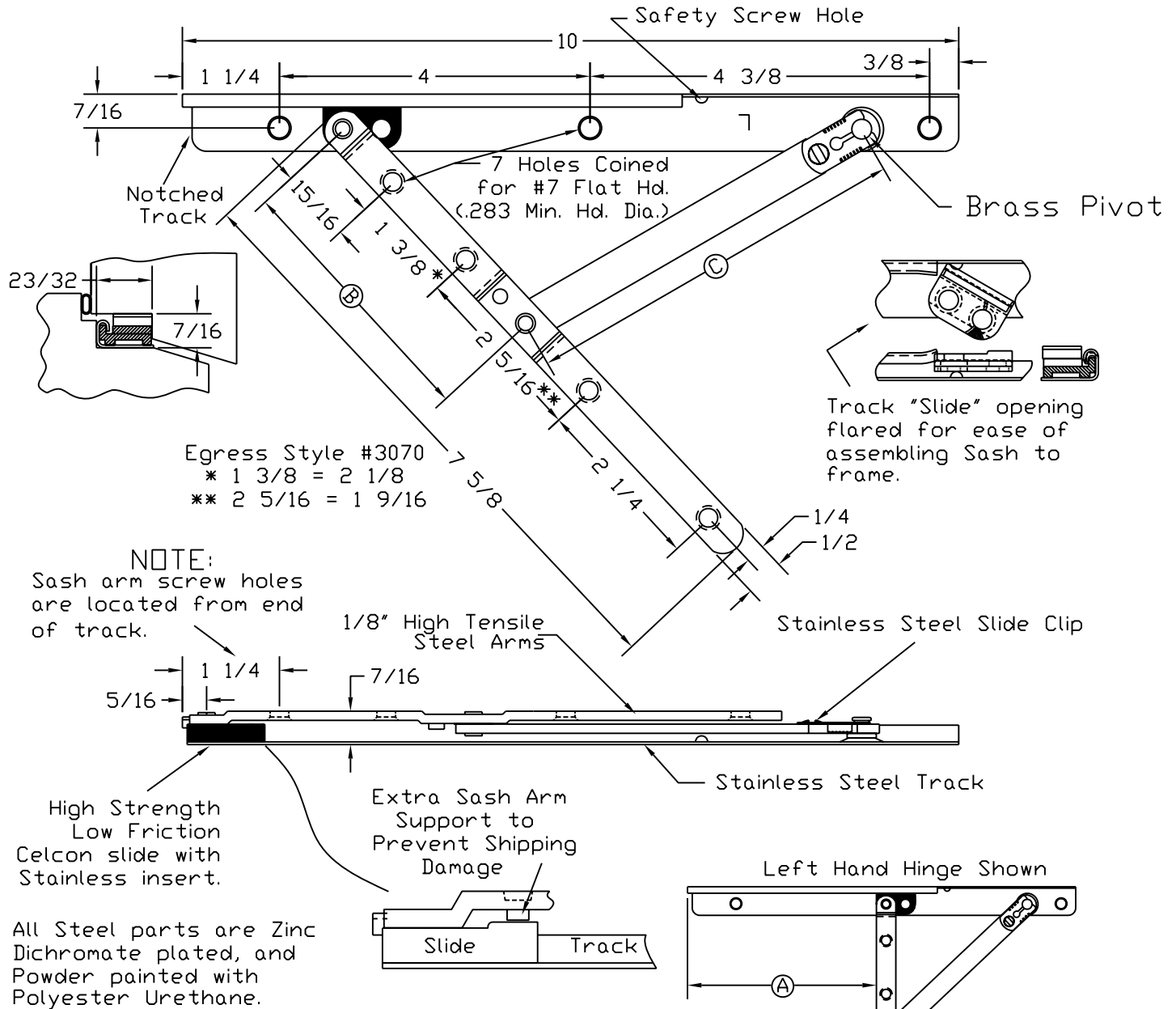


3300 D SERIES

10" CONCEALED CASEMENT HINGE



STYLE DESCRIPTION	ASSEMBLED UNITS	NON-ASSEMBLED		DIMENSIONS			DEGREE OF OPENING
		ARMS	TRACK	A	B	C	
STANDARD	3365D L/R	3060D L/R	3305 L/R13	4.869	3.438	5.000	97°
STANDARD	3367D L/R	3062D L/R	3305 L/R13	4.869	3.438	5.000	94°
EGRESS	3375D L/R	3070D L/R	3305 L/R13	2.295	1.938	6.500	N/A
EGRESS	3376D L/R	3071D L/R	3305 L/R13	1.067	1.000	7.500	N/A
WASHABILITY	3385D L/R	3080D L/R	3305 L/R13	5.437	3.663	4.775	90°
EGRESS	3390D L/R	3090D L/R	3305 L/R13	4.025	3.032	5.406	N/A

ALL METAL STAMPING, INC.

411 W. Spruce St. Abbotsford, WI 54405

Phone (715) 223-6324
Fax (715) 223-3352